

Study Linguistic Data Science (M.A.) at Ruhr-Universität Bochum

Our two-year program connects **Linguistics**, **Data Science**, and **Computer Science**.

While **Theoretical Linguistics** lay the foundation of linguistic work, methods from computer science have been refined or enhanced by **Computational Linguists** to suit the particular questions that arise in working with language. **Linguistic Data Science** is a newer branch of these sciences that brings methods and models from a data driven perspective to linguistic questions.

Studying Linguistic Data Science at LDSL you will learn to use your interest in these fields to work on an equal footing with other experts.

The course of studies is research-oriented and prepares students for a career at universities or in a broad range of industries.



Dates to remember

The program starts each winter term, **in October**

Application starts in June.

- a) If you live in Germany or have a German degree, your deadline is Oktober
- b) If **neither**, your deadline for applications is July, 15th.

The earlier your application reaches us, the earlier it can be answered.

Interested?

You can find more on our program at:

lds.lrub.de/study-linguistic-data-science

If you have any questions, please contact us:

fachberatung-lds@rub.de



Study Linguistic Data Science (M.A.) at Ruhr-Universität Bochum

Learning

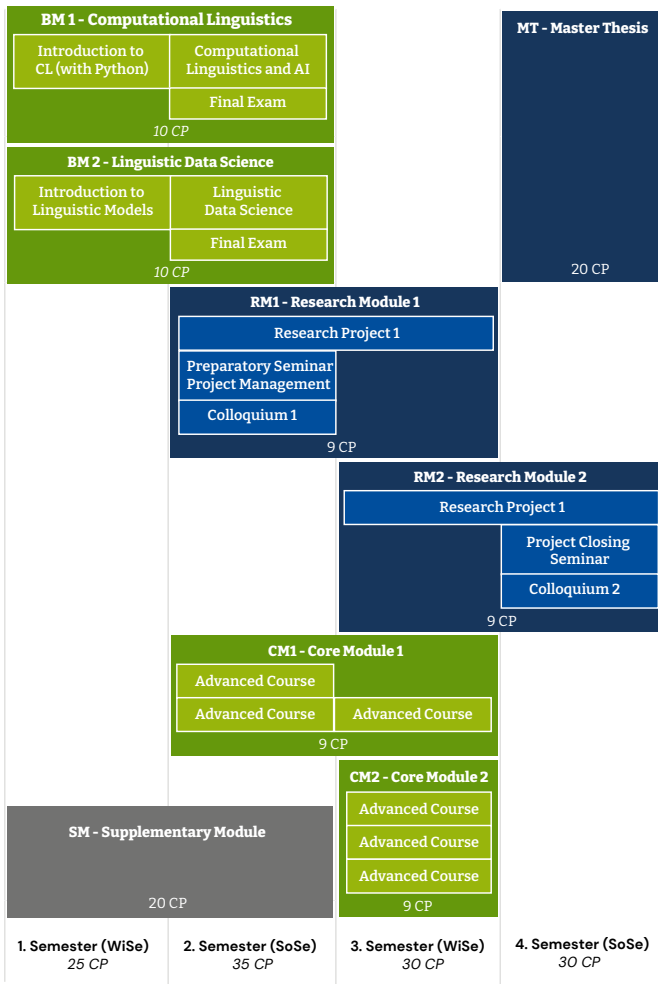
Research



Cooperation



Overview of the program



To build your own profile, choose Core Modules and topics for Research Modules from three possible Foci:

Theoretical Linguistics,
 Computational Linguistics,
 or Linguistic Data Science.

Modules

As a first impression, these will be the modules you will have to complete for the Master's program:

Computational Linguistics will be an introduction with Python to topics like tokenizing and parsing, machine learning (including NN) and pipeline programming.

Linguistic Data Science introduces you to methods and theories by learning with R and applying your knowledge to first problems of Linguistic Data Science.

Core Module 1 and **2** consist of three advanced courses each that you will pick to form your Focus.

The **Supplementary Module** lets you strengthen your focus or broaden your horizon.

Research Module 1 and **Research Module 2** will be defined by you - you choose a topic from your Focus to research alone or in a group. To help you, this module also contains seminars on project management and a weekly colloquium.

You finish the program with a **Master Thesis** in your fourth semester.

Application

Admission Criteria

Either 60 CP in Linguistics and 15 CP in Mathematics/Statistics or Computer Science, or 15 CP in Linguistics and 60 CP in Mathematics/Statistics or Computer Science.

Deadlines

If you live in Germany or have a German degree, you can apply until October, but to make sure everything runs smoothly best apply before September, 15th, by sending the following documents via email to bewerbung-lds@rub.de

If neither, apply online. Your deadline is July, 15th: <https://studium.ruhr-uni-bochum.de/en/internationals-application-masters-degree>

Required

You need to hand in the following documents:

- two pages describing your academic career so far
- degree certificate
- Transcript of Records
- proof of English knowledge
- confirmation of self-assessment-test from our website.

Find full information at:

ldsl.rub.de/study-linguistic-data-science/